

# Construction, Patternmaking, and Tailoring



A draped dress and raglan jacket that provided an understanding of how clothes fit the body.



Bodice drapes.





Dress and shirt-jacket were final projects for Sewing 100, which taught students how to operate industrial sewing machines, buttonhole machines, and sergers.



Shirt and trousers were drafted flat by hand using basic Size 8 slopers that provided an understanding of patterns, which were derived from basic blocks.



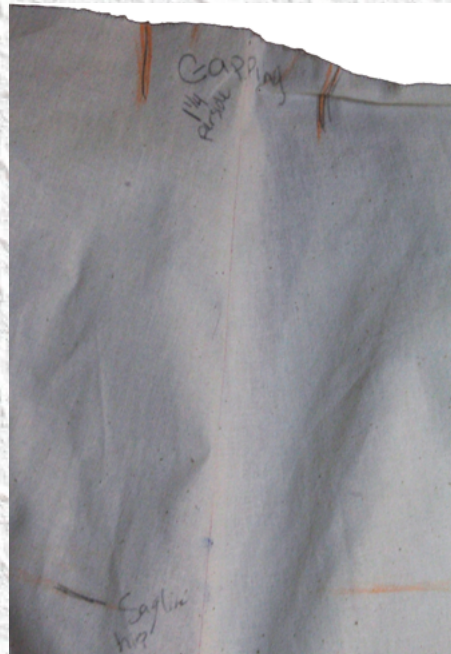
Started with measurements of a model and drafted slopers (blocks) according to those measurements using CLO3D.



First draft adjustments.



Final fitting of custom slopers.

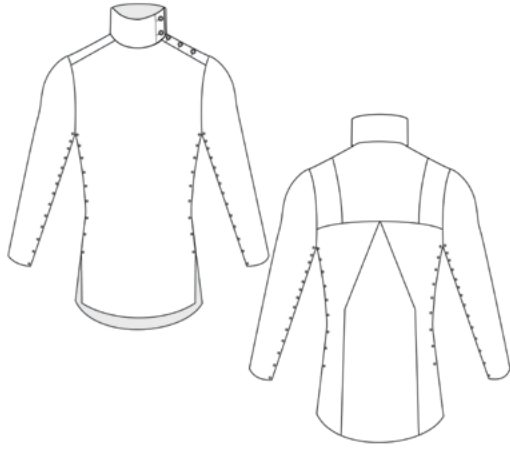




Collection	The Making of a Legend	# of Pieces	10	Date (Muslin)	Oct. 13, 2020
Designer	Jac Benford	Description	Fitted shirt with bring-up side seam and underarm, epaule and button closure at collar and left shoulder; includes placket.	Size	Custom to David W.
Garment	Fitted Shirt; Laced	Season	N/A	Date (Final)	Nov. 19, 2020

### Measurements

Specific Measurements Shirt		
POM	Description	Length(in)
1	CB Yoke Length	5.05425
2	Yoke to Hem	22.9607
3	Sleeve Length	24
4	Placket Width	0.000000
5	CF Length	21.6388
6	Collar Width	20.6296
7	Collar Placket Width	0.008801
8	Side Seam	12.4882
9	Shield Length	30.254
10	Shield Width	2
11	Side Yoke Width at Bottom	2.91903
12	Side Yoke Width at Shoulder	2.73387
13	Center Yoke Half Width at Bottom	5.25774



# Spec Sheets

### Trims and Closures



Eyelet Tape  
121in for Garment



1/16in  
Twisted Cotton  
Cord; undyed  
4.5 yards



1/8in



Buttons

### Eyelet Tape Installation



Stitched in as a seam

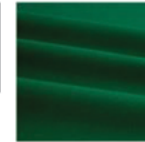


Tape binds raw edge

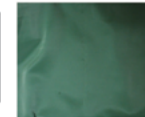


### Fabric Swatches

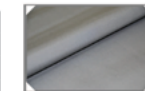
Name	Kaufman Canyon Colored Denim
Color	Jungle Green
Weight	6 oz/ sq. yard
Content	65% Cotton/35% Polyester



Name	Colored Lining for Pockets
Color	Green
Weight	Lightweight
Content	100% Polyesyer



Name	Slesia Pocketing Fabric
Color	Grey
Weight	Midweight
Content	Poly/Cotton



### Colors

#### From Color Story



Paritone  
18-6330 TCX  
Jumper



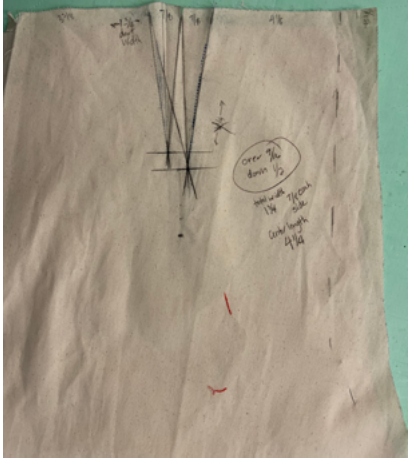




The Archer's Escape to the Wild



# Pomegranate Magic || Senior Collection



Started with standard Size 36 blocks to create each garment. Then fitted the garments to the models and made those adjustments for the final looks.



Embroidery

